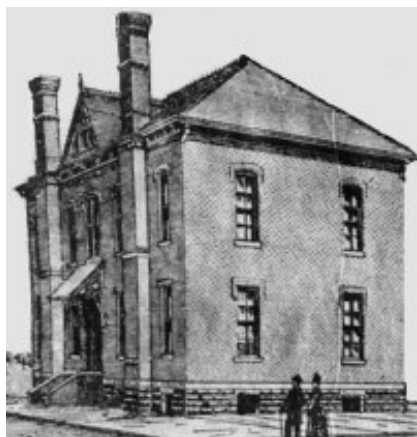


SCHOOLS FOR ABERDEEN CHILDREN

Children in Aberdeen began school in late August 1881; just one month after the town was founded. The first teacher was Mrs. Elenora Pleasants who opened a school in a nine-foot by 12-foot *shanty* located on First Street near the Milwaukee Depot in the Original Plat of Aberdeen. Mrs. Pleasants had 23 students of all ages who attended that school until November 1881. In those days, a school *term* lasted only two months, and two or three terms were held each year.



The first school building in Aberdeen (pictured at left) was built in 1883. It was *located* where the old Central High School building is today. This school was a two-story brick building with four rooms, and it was named Lincoln after President Abraham Lincoln. The elementary classes were held in the two rooms on the first floor and the high school classes were held in the two rooms on the second floor. Almost 150 students went to this school the first year it was open. Aberdeen grew so quickly that this school was too small for all the town's students after only three years. An *addition* was built to *enlarge* the school so more students could go there. The new addition and the *original* school were renamed Washington after President George Washington.

In 1898, a second Lincoln School was built near Washington School. In 1891, the first school north of the Chicago Milwaukee railroad tracks was built and named Jefferson after President Thomas Jefferson (pictured at right). During the next ten years as the town continued to grow, three more schools were built and named after presidents. In 1904, McKinley School was built on North Lloyd Street, and Garfield School was built on South Arch Street. Adams School was built on South Second Street in 1907. None of these schools remain standing today.



Other schools in Aberdeen, probably including yours, are more *modern* and named for *community leaders*. To find out about your school, look at the [“Who Was My School Named After”](#) page of this lesson.

The first Catholic school in Aberdeen opened in 1886. Classes were held in the *original* Sacred Heart Church building where a curtain was hung to *seclude* the sanctuary when school was in session. Teachers in this school were Presentation Sisters. These Sisters began raising money for a school building, and held a fair on Thanksgiving Day in 1887, which raised about \$1,900 for the new school.

Construction on a school building started in the winter of 1888, and the new school opened for classes that fall. This school was named the Presentation Academy. It was large enough for 100 students and had a *dormitory* big enough for 60 students. When the school opened, 91 students were *enrolled*. There were two elementary rooms--one for girls and one for boys. There were also rooms for junior high students.



The Saint Mary's parish built its own school in 1911 (pictured on next page). The teachers at this school were Sisters from the Benedictine Order in Yankton, South Dakota. Sacred Heart built a school in 1914 (pictured at left).

Roncalli High School was built in 1964 to serve students from both Sacred Heart and Saint Mary's parishes. In 1980, Sacred Heart Elementary became Roncalli Middle School and Saint Mary's Elementary became Roncalli Elementary. New buildings replaced these schools in 2003

and 2004.

To see what Presentation Academy, Jefferson School, and Washington School looked like, see the ["What Some Schools Looked Like"](#) page.



WHO MY SCHOOL WAS NAMED AFTER



May Overby Elementary School was built in 1958 and named after **Miss May Overby** who taught first grade at Garfield Elementary for 35 years. Miss Overby was born in 1887 at Northville, Dakota Territory. She taught school her entire life and retired in 1956. She died in Aberdeen September 9, 1979.



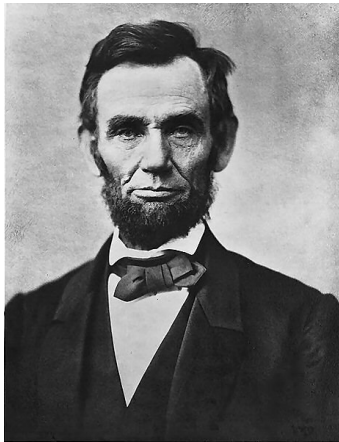
O.M. Tiffany Elementary School was built in 1941 and named for **Oliver Mathew Tiffany** who was a member of the Aberdeen School Board for 12 years from 1929 to 1941. He was Aberdeen's mayor from 1941 - 1946. He was born in 1877 in Northfield, Minnesota and died in Aberdeen on December 26, 1949.



Simmons Elementary School was built in 1955 and named for **John Simmons** who was a banker. He was born on November 27, 1858 and came to Dakota Territory in 1882, settling in Frederick. Eventually he owned over 5000 acres of farm ground in Brown County. He donated 20 acres of land to the city of Aberdeen on which to build Simmons Junior High School (now middle school), Simmons Athletic Field, and Simmons Elementary. He was a member of the first State Legislature after South Dakota became a state in 1889. John C. Simmons died on August 20, 1954.

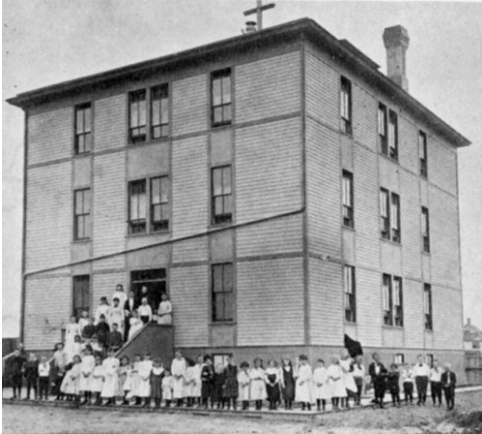


C.C. Lee Elementary School was built in 1973 and named after Aberdeen businessman **Clifford C. Lee**. Mr. Lee was born on October 23, 1890 in Aberdeen. In 1915, he and his father formed K.O. Lee and Son and sold farm machinery. In 1926 the company began manufacturing tools. Mr. Lee served as the president of K.O. Lee until 1978. Mr. Lee died October 1, 1978.



Lincoln Elementary School was originally built in 1916 and was the first city school to have electric lights. It was named after **President Abraham Lincoln**. Lincoln School was remodeled several times, and finally, the Lincoln School of today was built on the original site used in 1916.

WHAT SOME SCHOOLS LOOKED LIKE



The first Catholic school in Aberdeen was called **Presentation Academy**. It was built in 1888. How many years ago was that?



Jefferson School was the first school north of the Chicago Milwaukee Railroad tracks, and it was built in 1891. How old would Jefferson School be if it were still standing?



Part of this building was built in 1883 and named Lincoln. An addition was built in 1886 and the whole building was renamed **Washington**.

WORDS FOR ME TO LEARN

1. **SHANTY** (noun) A small roughly built wooden building.
2. **TERM** (noun) A length of time. Example: The school year has two terms.
Or Governor Rounds is serving his first term.
3. **LOCATED** (verb) To have placed something in a spot. Example. The school is located near my home.
4. **ADDITION** (noun) A section added to make a building larger.
5. **ENLARGE** (verb) To make bigger.
6. **ORIGINAL** (adjective) The first of something. Example: The original school building was torn down and replaced with a new one.
7. **MODERN** (adjective) New and up to date. Example:
This school building is very modern since it was just built.
8. **COMMUNITY LEADERS** (noun) People who are very active in the things that happen in their towns are community leaders.
9. **SECLUDE** (verb) To keep separate from other people or places.
Example: We will seclude students in the library so they can make up the test they missed yesterday.
9. **DORMITORY** (noun) A building at a school that has rooms for students to stay in during the week if they live too far from school to go home each night.
10. **ENROLLED** (verb) To have signed up for school or classes. Example:
My sister enrolled for high school yesterday.



Jefferson School

This beautiful brick building was built in 1889 and was one of Aberdeen first schools. Jefferson was the first school to be opened on the north side of the railroad tracks. It was located on North Washington where the Washington Street Gym is today.

Science Page

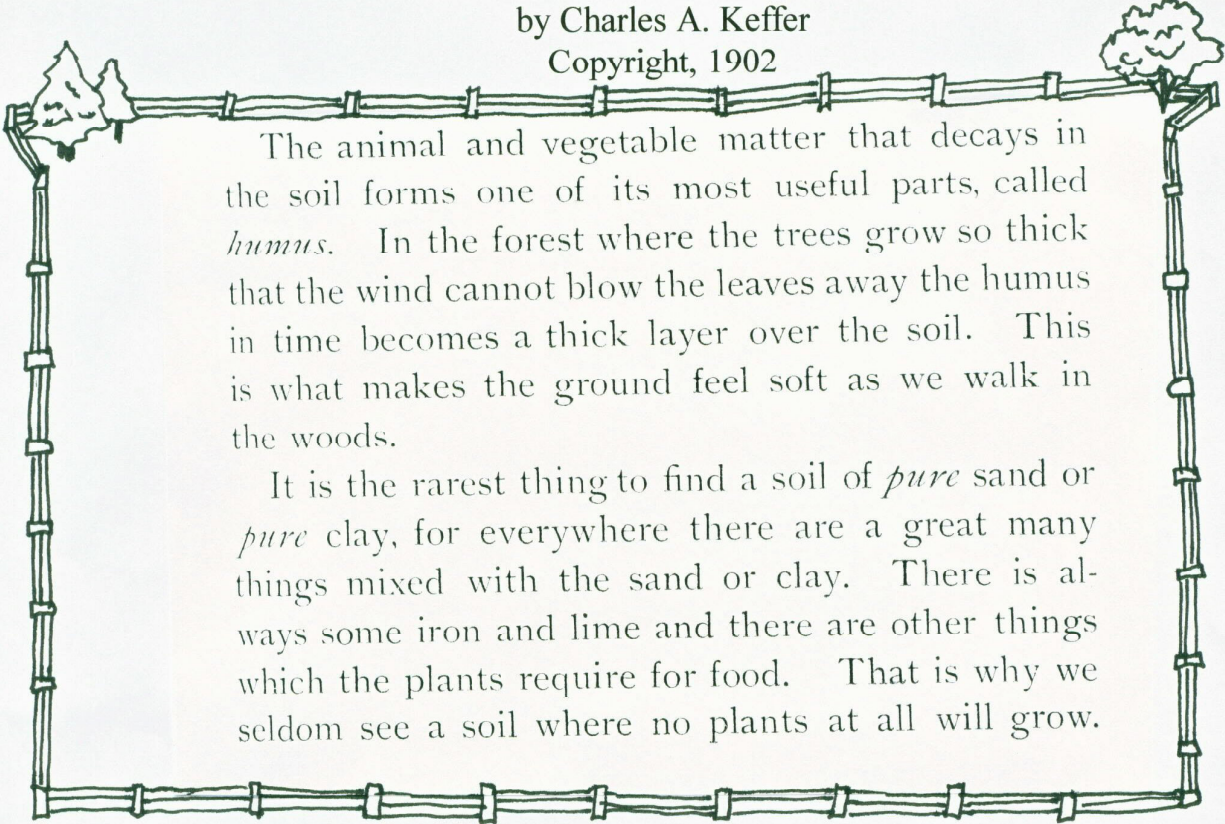
These two paragraphs were taken from one of the first Science books when Aberdeen schools began. They came from:

"Nature Studies on the Farm"

American Book Company

by Charles A. Keffer

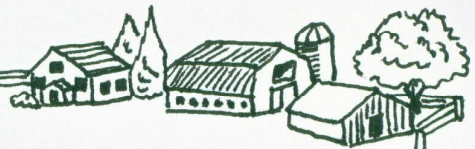
Copyright, 1902



The animal and vegetable matter that decays in the soil forms one of its most useful parts, called *humus*. In the forest where the trees grow so thick that the wind cannot blow the leaves away the humus in time becomes a thick layer over the soil. This is what makes the ground feel soft as we walk in the woods.

It is the rarest thing to find a soil of *pure* sand or *pure* clay, for everywhere there are a great many things mixed with the sand or clay. There is always some iron and lime and there are other things which the plants require for food. That is why we seldom see a soil where no plants at all will grow.

Agriculture is ***farming, food, fabric, forestry and flowers***. Those words bring to mind lots of ideas, things we use everyday. Write down or draw pictures of things you have touched, ate, used or smelled today.



WHO MY SCHOOL WAS NAMED AFTER

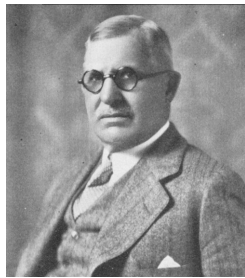
Match the person's name to the school name by drawing a line from the picture to the name.



Simmons Elementary



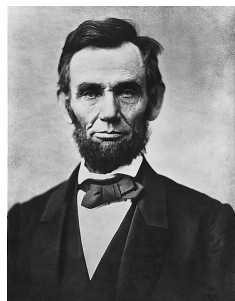
Lincoln Elementary



O. M. Tiffany Elementary



May Overby Elementary



C. C. Lee Elementary